



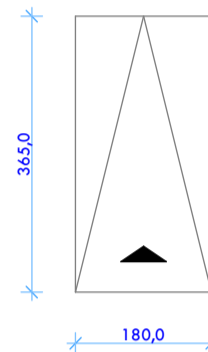
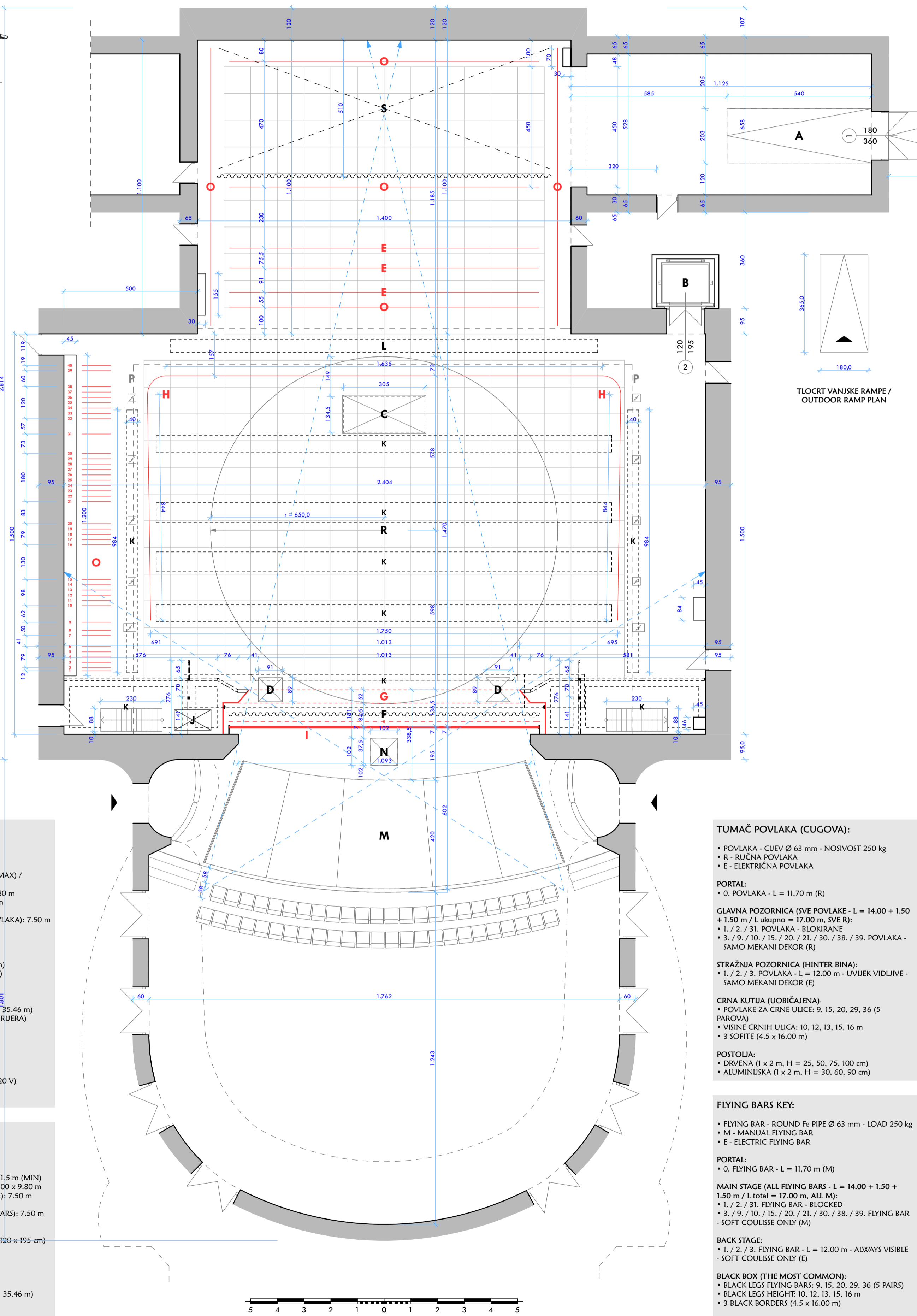
MJERILO / SCALE 1 : 100



N

TLOCRT POZORNICE I GLEDALIŠTA / STAGE AND AUDITORIUM PLAN
NIVO 0.00 - KOTE / LEVEL 0.00 - DIMENSIONS

PRESEK / SECTION



TLOCRT VANJSKE RAMPJE / OUTDOOR RAMP PLAN

TUMAČ:

- VELIČINA ULAZNIH VRATA (ZA UNOS DEKORA): 1.80 x 3.60 m
- ŠIRINA OTVORA POZORNICE: 10.13 m
- VISINA OTVORA POZORNICE: 7.50 m (MAX) / 1.5 m (MIN)
- VELIČINA PROSPEKTA (MAX): 14.00 x 9.80 m
- VISINA TVRDOG DEKORA (MAX): 7.50 m
- VISINA GLAVNE POZORNICE: 18.50 m
- VISINA STRAŽNJE POZORNICE (DO POVLAKA): 7.50 m

- A. RAMPA (15%, H = 150 cm)
- B. DIZALO (KABINA 150 x 180 x 195 cm, VRATA 120 x 195 cm)
- C. VELIKO PROPADALIŠTE (DUBINA 5.20 m)
- D. MALO PROPADALIŠTE (DUBINA 2.30 m)
- E. ELEKTRIČNA POVLAKA (CUG)
- F. PLS ZASTOR
- G. CRNI PORTAL
- H. KRUŽNI HORIZONT (H = 18.00 m, L = 35.46 m)
- I. ŽELJEZNI ZASTOR (PROTUPOŽARNA BARIJERA)
- J. INSPICIJENT PULT
- K. RASVJETA
- L. SPREMIŠTE ZA SVEČANI ZASTOR
- M. MEHANIČKI ELEMENTI ORKESTRA
- N. ŠAPTAONICA
- O. RUČNE POVLAKE (CUGOVI)
- P. PRIKLJUČCI NA ELEKTRIČNU MREŽU (220 V)
- R. ZAOKRETNI ELEMENT (RADIUS 6.50 m)
- S. SPREMIŠTE DEKORA (IZA ZAVJESE)

KEY:

- MAIN ENTRANCE DIMENSIONS (STUFF IMPORT): 1.80 x 3.60 m
- STAGE PORTAL WIDTH: 10.13 m
- STAGE PORTAL HEIGHT: 7.50 m (MAX) / 1.5 m (MIN)
- SOFT COULISSE DIMENSIONS (MAX): 14.00 x 9.80 m
- HARD PIECE OF SCENERY HEIGHT (MAX): 7.50 m
- MAIN STAGE HEIGHT: 18.50 m
- BACK STAGE HEIGHT (TO THE FLYING BARS): 7.50 m

- A. RAMP (15%, H = 150 cm)
- B. LIFT (CABIN 150 x 180 x 195 cm, DOOR 120 x 195 cm)
- C. GREAT TRAPDOOR (DEPTH 5.20 m)
- D. SMALL TRAPDOOR (DEPTH 2.30 m)
- E. ELECTRIC FLYING BAR
- F. RED VELVET CURTAIN
- G. BLACK PORTAL
- H. ROUND HORIZONT (H = 18.00 m, L = 35.46 m)
- I. IRON CURTAIN (FIRE PROOF BARIERE)
- J. STAGE MANAGER CONSOLE
- K. LIGHTS
- L. CURTAIN STORAGE
- M. MECHANICAL ORCHESTRA PLATFORM
- N. PROMPTER
- O. MANUAL FLYING BARS
- P. POWER OUTLETS (220 V)
- R. ROTATING STAGE (RADIUS 6.50 m)
- S. DECOR STORAGE (BEYOND THE CURTAIN)

TUMAČ POVLAKA (CUGOVA):

- POVLAKA - CIJEV Ø 63 mm - NOSIVOST 250 kg
- R - RUČNA POVLAKA
- E - ELEKTRIČNA POVLAKA

PORTAL:

- O. POVLAKA - L = 11.70 m (R)

GLAVNA POZORNICA (SVE POVLAKE - L = 14.00 + 1.50 + 1.50 m / L ukupno = 17.00 m, SVE R):

- 1. / 2. / 31. POVLAKA - BLOKIRANE
- 3. / 9. / 10. / 15. / 20. / 21. / 30. / 38. / 39. POVLAKA - SAMO MEKANI DEKOR (R)

STRAŽNJA POZORNICA (HINTER BINA):

- POVLAKE ZA CRNE ULICE: 9, 15, 20, 29, 36 (5 PAROVA)
- VISINE CRNIH ULICA: 10, 12, 13, 15, 16 m
- 3 SOFITE (4.5 x 16.00 m)

CRNA KUTIJA (UOBIČAJENA):

- POVLAKE ZA CRNE ULICE: 9, 15, 20, 29, 36 (5 PAROVA)
- VISINE CRNIH ULICA: 10, 12, 13, 15, 16 m
- 3 SOFITE (4.5 x 16.00 m)

POSTOLJA:

- DRVENA (1 x 2 m, H = 25, 50, 75, 100 cm)
- ALUMINIJSKA (1 x 2 m, H = 30, 60, 90 cm)

FLYING BARS KEY:

- FLYING BAR - ROUND Fe PIPE Ø 63 mm - LOAD 250 kg
- M - MANUAL FLYING BAR
- E - ELECTRIC FLYING BAR

PORTAL:

- O. FLYING BAR - L = 11.70 m (M)

MAIN STAGE (ALL FLYING BARS - L = 14.00 + 1.50 + 1.50 m / L total = 17.00 m, ALL M):

- 1. / 2. / 31. FLYING BAR - BLOKED
- 3. / 9. / 10. / 15. / 20. / 21. / 30. / 38. / 39. FLYING BAR - SOFT COULISSE ONLY (M)

BACK STAGE:

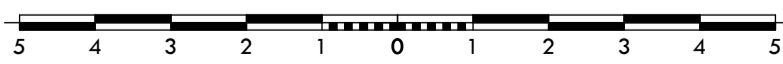
- 1. / 2. / 3. FLYING BAR - L = 12.00 m - ALWAYS VISIBLE - SOFT COULISSE ONLY (E)

BLACK BOX (THE MOST COMMON):

- BLACK LEGS FLYING BARS: 9, 15, 20, 29, 36 (5 PAIRS)
- BLACK LEGS HEIGHT: 10, 12, 13, 15, 16 m
- 3 BLACK BORDERS (4.5 x 16.00 m)

PREPARED STAGE ELEMENTS:

- WOODEN (1 x 2 m, H = 25, 50, 75, 100 cm)
- ALUMINIUM (1 x 2 m, H = 30, 60, 90 cm)



MJERILO / SCALE 1 : 100



N